

FX48 Series

Optical Power Meter (OPM)



Key Features

- Singlemode and Multimode testing
- Telecom, FTTx, CWDM, and CaTV applications
- Power Meter option only
- High accuracy and wide dynamic range
- Save >950 OPM results with time stamp
- 17 calibrated wavelengths
- Transfer stored results to a PC via USB for report generation, printing and Fiberizer® Cloud upload
- Reference power level setup and recall
- Modulation detection for fiber identification
- Wave ID automatically detects incoming wavelength from compatible VeEX light source
- Splash resistant keypad and chassis design
- High contrast display - visible outdoors and backlight for indoor or low light conditions
- Alkaline or rechargeable batteries with auto power off
- Field interchangeable OPM adapters support multiple connector types and allow easy access for cleaning

Key Specifications

Optical Power Meter (OPM)

- 17 calibrated wavelengths: 830, 850, 940, 980, 1300, 1310, 1330, 1470, 1490, 1510, 1530, 1550, 1570, 1590, 1610, 1625 & 1650 nm
- Level measurement range:
 - PM1 version: -70 to +10 dBm
 - PM2 version: -50 to +25 dBm
 - PM3 version: -65 to +15 dBm
- Detector type: InGaAs
- Accuracy: +0.2 dB or 5%
- Wave ID detection (compatible VeEX source): 1310, 1490, 1550, 1625, & 1650 nm
- Tone detection: 270 Hz, 330 Hz, 1 kHz, 2 kHz

General

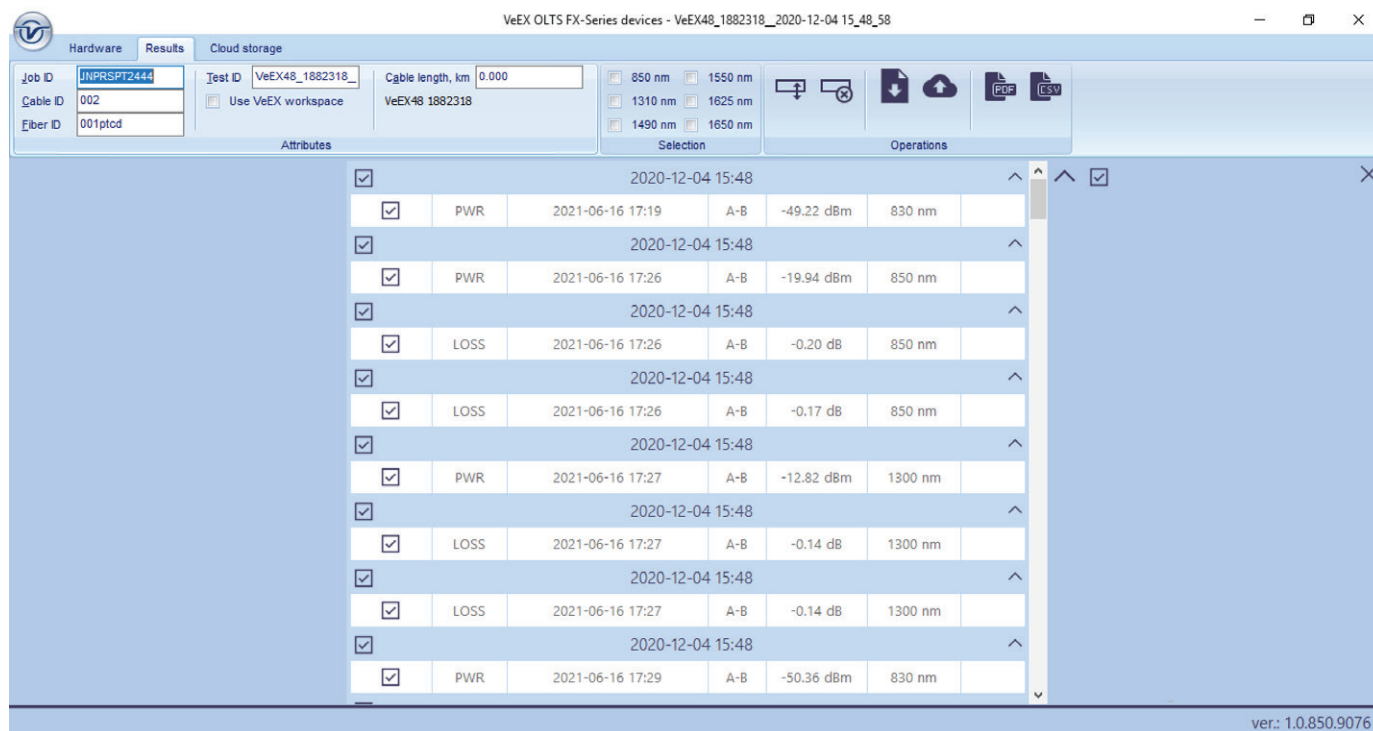
- Communication port: micro USB
- Connector or adaptor types: FC/SC/ST/LC, Universal 1.25, Universal 2.5 mm
- Battery: AA alkaline or rechargeable NiMH with 5V micro-USB power adapter
- Battery operating time: approximately 80 hours (without backlight)
- CE compliant



Value added data post processing
Fiberizer Cloud
cloud.fiberizer.com



OPM and OLTS test results can be easily transferred to a Windows PC or Mobile device via USB connection. Fiberizer LT-Sync PC software and Fiberizer Mobile (Android) applications support test result filtering and basic report generation. Fiberizer Desktop Plus and Cloud software applications provide advanced processing and reporting including centralized test data management and archiving.



Optical Specifications

Power Meter	
Calibration wavelengths (nm)	830/850/940/980/1300/1310/1330/1470/1490/1510/1530/1550/1570/1590/1610/1625/1650
Power range (dBm) options - Standard (PM1), InGaAS (1 mm) - High (PM2), InGaAS (1 mm)	-65 to +10 -50 to +25
Power measurement accuracy, % (dB)	± 5 (± 0.22) ± 8 (± 0.33)
Linearity, % (dB)	± 2.5 (± 0.11) ± 4 (± 0.17)
Display Resolution (dB)	0.01
Optical Adaptors (Interchangeable)	ST/SC/FC/LC, Universal 2.5/1.25 mm
Test Tone Detection	270 Hz, 330 Hz, 1 kHz, 2 kHz

General Specifications

Size: 129 x 61 x 38 mm (H x W x D)
 Weight: <310 g (<0.7 lbs) OPM configuration
 Construction: Rugged, Polycarbonate chassis, 1 meter drop tested
 Battery: Two standard Alkaline AA or Rechargeable NiMH, 2150 mAh
 Power Supply: Micro USB interface, 5 VDC charger

PC connection: Micro USB interface, data transfer via Fiberizer mobile and LT-sync software
 Storage: >1000 single wavelength results
 Display: High contrast, 28 x 23 mm (35 mm), B&W transfective LCD, 96 x 80 pixels with backlight
 Operating Temp: -10°C to +50°C
 Storage Temp: -20°C to +70°C
 Humidity: 0% to 95%, non-condensing



VeEX Inc.
 2827 Lakeview Court
 Fremont, CA 94538 USA
 Tel: +1.510.651.0500
 Fax: +1.510.651.0505
 www.veexinc.com
 customercare@veexinc.com

© 2021 VeEX Inc. All rights reserved.
 VeEX is a registered trademark of VeEX Inc. The information contained in this document is accurate. However, we reserve the right to change any contents at any time without notice. We accept no responsibility for any errors or omissions. In case of discrepancy, the web version takes precedence over any printed literature.
 D05-00-160P D00 2021/9